

MVC-630B II

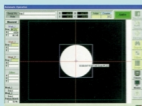
OPTICAL V-SCORING SYSTEM

光學系統式V刻機



FEATURES 特點

- Direct recognition of the marking or tooling holes leads less deviations between V-Score lines and the patterns of the panel.
- θ offset after measuring markings or tooling holes.
- Loader / Unloader.
- X-Y Axis · Jumping Score.
- Jumping Score.
- Stable accuracy for V-Score Pitch & Web-Thickness by clamping panel.
- 直接讀取對位孔或對位靶點，最大程度降低V槽與圖形間的尺寸偏差
- 讀取對位孔或對位靶點後以角度補償
- 含自動投收板系統
- 可選裝XY方向同對加工裝置
- 跳刀加工
- 使用夾爪系統，位置及彈厚精度穩定



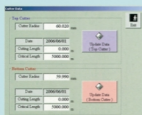
● Tooling Hole Image
對位孔的影像



● Auto Operation Display
自動操作顯示



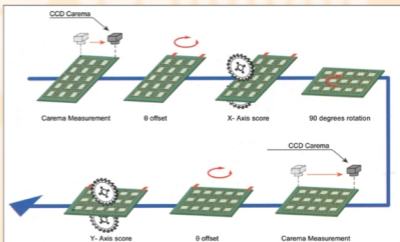
● Auto Operation Image
自動操作畫面顯示



● Cutter Information Display
刀具信息顯示

SPECIFICATIONS 規格

- PANEL SIZE : Max. 630mm×630mm
Min. 100mm×100mm
Thickness (mm) 0.3~3.2t
- TOLERANCES : Pitch Parallelism : ± 0.03 mm
Web Thickness : ± 0.03 mm
Pitch Accuracy : ± 0.03 mm
(Depends on panel conditions) (by 1.6t unclad panel)
- SCORING AREA : Any location except 5mm from each edge.
- MACHINE DIMENSIONS(mm) : 2,700L×2,213W×1,618H (8.85'×7.26'×5.3')
(with Loader/Unloader)
- NET WEIGHT : Approx. 2,000kg



MVP-630A

PIN REGISTRATION

V-SCORING

SYSTEM

鑽基準式V刻機



FEATURES 特點

- Manual loading.
- Area sensor for safety.
- High depth control by servo system.
- Clamp system for thin panels.
- 100 lines in one Axis.

- 手動上板
- 區域傳感器保障安全
- 使用伺服系統，深度控制範圍大
- 使用夾爪系統，可應對薄板生產
- 單一方向可加工100刀

SPECIFICATIONS 規格

PANEL SIZE : Max. 630mm×630mm

Min. 150mm×150mm

Thickness (mm) 0.3~3.2t

TOLERANCES : Pitch Accuracy : ±0.03mm

Pitch Parallelism : ±0.03mm

Web-Thickness : ±0.03mm

(hole to V-line depends on the accuracy of holes)

CUTTING SPEED : Max.40m/min. (It depends on the material of panels)

Standard Working Speed : 25-30m/min.

Working Speed with Jump : 15-20m/min.

JUMP SCORING : Max. 10 times/line (It depends on the length of panels)

POSITION OF REGISTRATION PINS : 5~12×5~12mm (Fixed Pin)

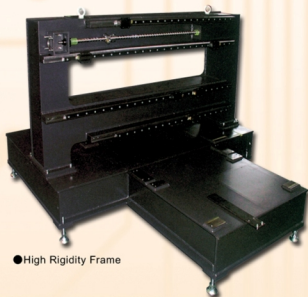
5~12×140~620mm (Movable Pin)

DIAMETER OF REGISTRATION PINS : φ3.000~5.000mm (φ3.15mm as a Standard)

MACHINE DIMENTIONS (mm) : 2,300L×1,895W×1,618H (7.54'X6.21'×5.3')



● Servo System



● High Rigidity Frame